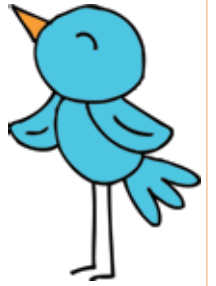


Spring 2017

Retiree
Chapter
Cultural
and
Educational
Program



ONLINE REGISTRATION opens Monday, Feb. 6. Brochure will be viewable Monday, Jan. 30.

Dear Retirees,

Put your traveling shoes on! Our Educational, Cultural, and Social staff and the dedicated and knowledgeable members of their committee have once again, sifted and reviewed many educational and cultural offerings that the city and tri-state area have to offer, and have come up with the best program in our history. We keep extending our reach and expanding our horizons so that we can present, both cutting edge and tried and true trips, classes, events and activities. Take advantage of this unique program, as our offerings get filled up very quickly. Stretch your body or stretch your mind.

Reacquaint yourself with colleagues you haven't seen in a while and make new friends with similar interests.

In unity,

Gayle Lockett, Retiree Chair

Mark Brodsky, Retiree Chair Director

Lucie Elio, Educational/Cultural Coordinator

CLUBS/CLASSES

SP17C1 Beginner Bridge II – The Novice

Instructor: Michael Ebenstein

Location: 40 Rector St., 12th Floor, NYC

Day/Dates: Tuesdays, 3/28; 4/4; 4/25; 5/2; 5/9; 5/16; 6/6; 6/13

Time: 10 am to 12 noon

Fee: Member \$40, non-member \$45

Limited: 16 participants **P**

This class is a continuation of Beginner Class I – The Novice. It will build on the beginning knowledge taught in the Fall class and present new concepts such as some of the important Bridge conventions. Anyone who has some knowledge of Bridge and wishes to join the fun should find no problem in following along.

SP17C2 Supervised Intermediate Bridge – Advanced Beginner to Intermediate

Instructor: Michael Ebenstein

Location: 40 Rector St., 12th Floor, NYC

Day/Dates: Tuesdays, 3/28; 4/4; 4/25; 5/2; 5/9; 5/16; 6/6; 6/13

Time: 1 pm to 3 pm

Fee: Member \$40, non-member \$45

KEY TO SYMBOLS:

T TRAVEL INSTRUCTIONS WILL BE MAILED

P PARKING/TRANSPORTATION AVAILABLE

S THIS EVENT IS SOMEWHAT STRENUOUS

Limited: 16 participants **P**

This class is for the advanced beginner bridge player and those on the intermediate level. The class will feature short lessons at the beginning of each session followed by the playing of hands in a supervised format.

SP17C3 American Mah Jongg

Instructor: Beverly Hershkowitz

Location: 40 Rector St., 12th Floor, NYC

Day/Dates: Mondays, 2/27, 3/6, 3/13, 3/20, 3/27, 4/3

Time: 12:30 pm to 3:30 pm

Fee: Member, \$40, non-member \$45

Limited: 16 participants **P**

Come play Mah Jongg. For those in need of instruction, Beverly Hershkowitz will provide it. For those looking to just play, bring your friends or come to make new ones. Previous graduates are warmly welcomed!

Continued on R2



LUCIE ELIO

■ Quilting instructor Brenda Luck displays a star-spangled rectangular quilt.

Calligraphy

Art of Chinese Writing

The CSA Retiree Chapter has developed a partnership with the China Institute. They offer a wide range of Chinese language classes at every proficiency level from beginner to advanced. They will also offer short courses in Calligraphy, Brush Painting, Business Chinese Etiquette and Tai Chi. In conjunction with the institute we will be offering in the future some of their classes and courses. This semester we are offering Calligraphy for 8 sessions.

SP17C9 Calligraphy

CSA Instructor: Jiaxuan (Jim) Zhang

Location: 40 Rector Street, 2nd Floor (China Institute)

Day/Date: Wednesday, 3/1, 3/8, 3/15, 3/22, 3/29, 4/5, 4/12, 4/19

Time: 10 am – 12 pm

Fee: \$280 members, \$285 non-members

Limited: 8 participants **P**

This Calligraphy class covers the art of Chinese writing. Students will learn how to use the brush and be given an artistic and etymological introduction

to China's system of writing, which is an important key to understanding and appreciating Chinese art, history and culture. Students will learn and practice basic brush strokes and characters in a meditative, relaxed atmosphere. Classes will begin with a demonstration, followed by time for individual attention, that will allow students to learn at their own pace. Knowledge of Chinese or brush technique is not necessary. Materials are supplied for the first class only. Other materials will need to be purchased.

R2 Complete Educational/Cultural Program



Continued from previous page

CLUBS/CLASSES

SP16C5 Quilting 104

Instructor: Brenda Luck

Location: 40 Rector St., 12th Floor, NYC

Day/Dates: Thursdays, 3/2, 3/16, 3/23, 3/30, 4/27, 5/4

Time: 9:30 am to 12:30 pm

Fee: Member \$40, non-member \$45 (The fee includes the patterns.)

Limited: 10 participants **P**

This class is designed for anyone who would like to learn the basics of quilting. You only need to know how to do basic sewing stitches, (running stitch and back stitch). The focus this semester will be on creating a Crazy Quilt block which can then be used to create the lap quilt or the quilt size of your choice. A list of supplies will be sent with the confirmation of registration.

SP17C6 Acrylic Painting Workshop

Instructor: Nancy Baldwin

Location: 40 Rector St., 12th Floor, NYC

Day/Dates: Mondays, 5/1, 5/8, 5/15, 5/22

Time: 10 am – 1 pm

Fee: Member \$60, non-member \$65

Limited: 10 participants **P**

Come paint and chat at the Painting Workshop. Explore your creativity while creating your own masterpiece.

No experience or skill required. An art instructor will guide you in a step-by-step production of a featured painting. The list of supplies will be sent with the confirmation of registration. The materials can be purchased at Michael's Craft Store (canvas, easel, acrylic paints, brushes, etc.). You will leave the class with your very own work of art.

SP17C7 Stitch-by-Stitch: New York City's Garment Center

Instructor: Barry Feldman

Location: 40 Rector St., 12th Floor, NYC

Day/Dates: Mondays, 4/24, 5/1, 5/8, (Trip 5/15)

Time: 1 – 3 pm

Fee: Member \$80, non-member \$85

Limited: 10 participants **TPS**

Do you remember the "I cash clothes" man or Yiddish "alte zakhin" peddlers who crossed the city? This four-session class is a lively exploration of New York City's garment industry from 19th century used clothing stores to the haute couture designers that distinguish the city's contemporary fashion industry. The final session will be a tour of the historic garment center.

SP17C8 Meditation

Instructor: Anne Sussman

Location: 40 Rector St., 12th Floor, NYC

Day/Dates: Fridays: 3/17, 3/24, 3/31,

4/7, 4/21

Time: 1 – 3 pm

Fee: Member \$325, non-member \$330

Limited: 15 participants **P**

Anne Sussman is the founder of Mindfulness Meeting Place. Anne received her certification as a Mindfulness and Meditation Instructor at the McLean Meditation Institute. Her training in Mindfulness Meditation techniques is a perfect complement to her strength as a born educator. Anne's goal is to help you live better. You too can have a happier, calmer, more benevolent life, and it does not have to be so hard. Anne is not a guru, or a spiritual healer, but someone, just like you, struggling to live in our fast-paced, often stress-filled world. If you want to attain clarity, feel less stressed, tap into your innate creativity, sleep better, become more focused and productive, and have greater health and wellness in your life, then begin your practice so you have the tools to achieve just that.

TENNIS CLINICS

For the spring 2017 semester, the Retiree Chapter has again made arrangements with the West Side Tennis Club in Forest Hills for group tennis lessons in their indoor facilities. There will be three sets of intermediate tennis lessons. Each clinic

will run for four weeks and will accommodate four participants. The theme of the clinic will be stroke production. Each session will run for one and one half hours. Registrants above the initial four will be placed on a wait list. If we have sufficient numbers on the wait list, we will be open a second group. You may register for one, two or all three of the intermediate clinics. These clinics offer a great value and we expect them to fill up quickly. Please note that there is free parking at the Tennis Club. During the month of May, the lessons will move outside where an "all-white dress code will be in force."

SP17C10 Intermediate Tennis Clinic 1 PTS

Instructor: West Side Tennis Club Pro

Location: West Side Tennis Club, Forest Hills

Day/Dates: Thursdays, 3/2, 3/9, 3/16, 3/23

Time: 11:30 am to 1 pm

Fee: Member, \$105, non-member \$110

Limited: 4 participants per session

SP17C11 Intermediate Tennis Clinic 2 PTS

Instructor: West Side Tennis Club Pro

Location: West Side Tennis Club, Forest Hills

Day/Dates: Thursdays, 3/30, 4/20, 4/27, 5/4

Time: 11:30 am to 1 pm

Fee: Member, \$105, non-member \$110

Limited: 4 participants per session

SP17C12 Intermediate Tennis Clinics 3 PTS

Instructor: West Side Tennis Club Pro

Location: West Side Tennis Club, Forest Hills

Day/Dates: Thursdays, 5/11, 5/18, 5/25, 6/1

Time: 11:30 am to 1 pm

Fee: Member, \$105, non-member \$110

Limited: 4 participants per session

SP16C13 Golf PTS

Instructor: Bob Guido, John Morrison

Location: North Shore Towers, Grand Central Parkway, Floral Park, NY

Day/Dates: Wednesdays, 3/29, 4/19, 4/26, 5/3

Time: Section 1: 10 am to 11:30 am and Section 2: 11:30 am to 1 pm

Fee: Member \$165, non-member \$170

Limited: 8 participants

Robert Guido and John Morrison are PGA professionals who work at the North Shore Towers Golf Club. The class will be following the theme of the last few semesters "Course Play". With the small size of the group, Bob and John will be able to personalize instruction, taking into account that everyone may not be at the same playing level. Please note that if we have sufficient numbers, we will run two sections. Section I will be filled first.

Continued on next page



LUCIE ELIO

■ Ringwood Manor in New Jersey was the site of an ironworks and home of well-known ironmasters, Peter Cooper and Abram S. Hewitt, from the 1740s to the late 19th century.

Online registration opens on Monday, Feb. 6 at 11 a.m. Brochure will be posted Monday, Jan. 30.

www.csa-nyc.org

You may also use the forms included on Pages R5 and R6. Rules and regulations are on the forms.



Wine Seminar

Wines From Across the Mediterranean Sea

SP17L2 Wine Seminar – Wines across the Mediterranean
Lecturer: Ron Attivissimo
Lecturer: Ron Attivissimo
CSA Leader: Emerson Spry
Location: 40 Rector St., 12th Floor, NYC
Day/Dates: Friday, 6/2
Time: 5 to 6:30 pm
Fee: Member \$40, non-member \$45
Limited: 20 participants
PT



With the summer approaching, we will look at wines from areas that border the Mediterranean: Spain (Penedes, Priorat, Cava, Andalucia), France (Provence, Languedoc/Roussillon), Italy (Sicily, Sardegna, Pantelleria), Greece (Santorini), and a few extras (Galicia, Rueda, Vinho Verde, etc.) that should have you clamoring for a cruise on the Mediterranean.

SP17C15 Film Club
Instructor: Mark Kaufman
Location: Locations vary
Dates: Dates vary
Time: Times vary
Fee: There is a \$5 fee for any members/spousal member registering for the first time. Previous registrants need not re-register (no fee). IF YOU REGISTERED IN THE FALL YOU NEED NOT REGISTER AGAIN. If you did not register in the fall you can still register in the spring. Participants will be responsible to purchase their own film tickets for the films they attend. This

KEY TO SYMBOLS:

- T** TRAVEL INSTRUCTIONS WILL BE MAILED
- P** PARKING/TRANSPORTATION AVAILABLE
- S** THIS EVENT IS SOMEWHAT STRENUOUS

club has been created to provide social opportunities for members to explore both classic and recently released film productions in a cordial and intellectual environment with their fellow colleagues. After each film offering, the group will meet to discuss the film.

LECTURES/SEMINARS

SP17L1 Finance Lecture – Wills and Trusts: Similarities and Differences
CSA Leader: Emerson Spry
Location: 40 Rector St., 12th Floor, NYC
Day/Dates: Thursday, 3/1
Time: 10:30 am – 12 noon
Fee: Member/spousal member only \$10
Limited: 40 participants **P**

As CSA retirees, the question arises “How do we provide for our loved ones when we are no longer here?” This is not a pleasant topic but it is vital to have this question answered. We will have a certified financial planner speak

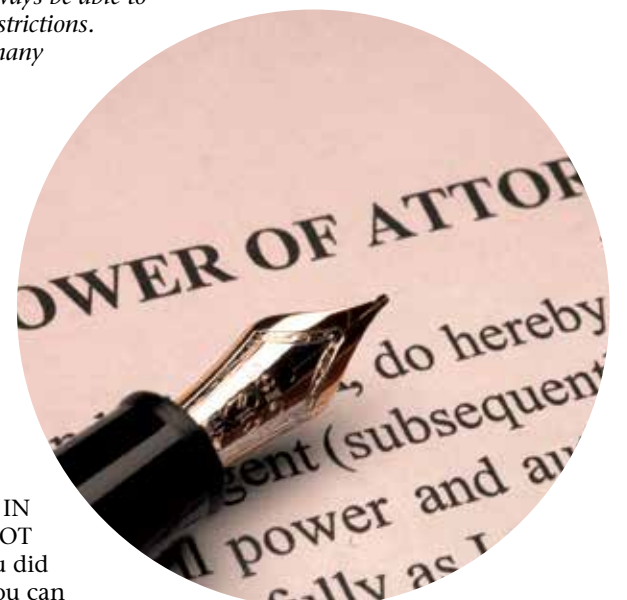
DINING AND FILM CLUBS

Please note: ANYONE INTERESTED IN PARTICIPATING IN THE DINING CLUB MUST REGISTER EACH FALL. There is an annual registration fee of \$5. Information will be sent to you by email only and payment will be only online with a credit card (no checks). When registering please provide us with a valid email address to aid with communications. Members will always be able to bring one guest without restrictions. Our goal is to involve as many members as possible.

SP17C14 Dining Club

CSA Leaders: Stanley Wilson, Harriet Cohen
Location: Will vary according to member interests
Day/Dates: 4/5; 4/27; 5/25, 6/15; 6/16; 6/22
 Subject to change
Time: usually around 1:30 to 3 pm
Fee: There is a \$5 fee for registration.

IF YOU REGISTERED IN THE FALL YOU NEED NOT REGISTER AGAIN. If you did not register in the fall you can still register in the spring. Prices will vary depending upon the restaurant. Participants will be responsible for the cost of their beverages. This club has been created to provide the membership with social opportunities to explore their dining interest in a social group setting. Please note: The cost is inclusive of everything except any type of alcoholic beverage, coffee, tea or soda. We plan to offer three dining experiences per semester.



■ A certified financial planner is scheduled for the, “Wills and Trusts” seminar.

to us about “Wills & Trusts: Similarities and Differences.” The many types of wills and trusts will be discussed. This presentation will be for information purposes only. There will be no attempt to sell or promote any financial instrument.

Continued on R4



LUCIE ELIO

■ ABOVE, TOP: A chalkboard at the Apollo Theatre is signed by many of the venue’s performers and luminaries. ABOVE: Sharon Thompson, Aqunette Purnell-Hurd, the Apollo’s curator, Billy, and Gayle Lockett during a trip to the acclaimed theatre in September.



Painting, Sculpture, Collage and More

Come and Check Out Parts of Manhattan's Art Gallery Scene

SP17T6 Tour of the Chelsea

Art Galleries & Lunch
CSA Leader: Mark Kaufman
Tour Guide: Tina Weintraub
Location: TBD
Day/Dates: Thursday, 4/6
Time: 11 am – 3 pm
Fee: Member \$65, non-member \$70
 The fee includes lunch
Limited: 15 participants **TS**

SP17T7 Tour of the 57th Street

Art Galleries & Lunch
CSA Leader: Barbetta Krinsky
Tour Guide: Tina Weintraub
Location: TBD
Day/Dates: Wednesday, 5/3
Time: 11 am – 3 pm
Fee: Members \$63, non-members \$68
 The fee includes lunch
Limited: 15 participants **TS**

SP17T8 Tour of the 57th Street

Art Galleries & Dinner
CSA Leader: Stanley Wilson
Tour Guide: Tina Weintraub
Location: TBD
Day/Dates: Friday, 5/5
Time: 4 pm – 8 pm
Fee: Member \$80, non-member \$85
 The fee includes dinner
Limited: 15 participants **TS**

Tina Weintraub has been running Art Gallery Tours for the Retiree Chapter for years. We usually alternate between the Art galleries in Chelsea and 57th Street. By special request for the spring semester join Tina and our members as they tour both art galleries. There will be a tour during the day of the Chelsea (4/6) and the 57th Street (5/3) Art Galleries and an evening tour of the 57th Street Art Galleries (5/5). After the afternoon tours, we will lunch in a nearby restaurant and after the evening tour the group will go to dinner.

Please note: as with any of our walking tours there will be extensive walking. You should expect to be walking and or standing for up to and perhaps for more than 2 hours. Remember to wear comfortable shoes.



SPECIAL PULLOUT SECTION

Continued from R3

TRIPS/WALKING TOURS

SP17T1 Radio City Music Hall

Stage Door Tour & Lunch
CSA Leader: Barbetta Krinsky
Location: 1260 Sixth Avenue, Manhattan
Day/Dates: Thursday, 3/9
Time: 11 am to 3 pm
Fee: Member \$94, non-member \$99
 The fee includes lunch
Limited: 20 participants **PTS**

Get a comprehensive look at America's art deco show palace, Radio City Music Hall. We'll explore the innovative mind of interior designer, Donald Deskey who incorporated his love for the 'new' art. His original 1932 furnishings have been expertly restored and adorn the public spaces and lounges of the Music Hall. The lounges also house some significant works by prominent artists Stuart Davis, Yasuo Kuniyoshi, Withold Gordon Henry Billings and Eduard Buk Ulreich. We'll also visit the Roxy Suite, one of the few remaining spaces designed by Deskey. After the tour we will have lunch at the renowned Rock Center Café.

SP17T2 Brooklyn Historical Society & Lunch

CSA Leader: John Oricchio
Location: 128 Pierrepont St, Brooklyn
Day/Dates: Wednesday, 3/22
Time: 10:30 am to 3 pm
Fee: Member \$64, non-member \$69
 The fee includes lunch
Limited: 20 participants **PTS**

Brooklyn Abolitionist/In Pursuit of Freedom explores Brooklyn's anti-slavery movement from the end of the American Revolution to the early days of Reconstruction through photographs, census records, anti-slavery

and local newspapers, maps and more. View a replica of Brooklyn Historical Society's rare copy of the Emancipation Proclamation, signed by Abraham Lincoln in 1863, and examine its dramatic and polemic impact on Americans at the height of the Civil War. The exhibit suggests ways that the document's social and political meaning has evolved in the 150 years since it was signed, and invites visitors to reflect on its legacy in the twenty-first century.

SP17T3 Metropolitan Opera House "Backstage"

CSA Leader: Al Nilsen
Location: 30 Lincoln Center Plaza, Manhattan
Day/Dates: Sunday, 3/26
Time: 10:30 am – 12 noon
Fee: Member \$25, non-member \$30
Limited: 20 participants **PTS**

Come with us and go behind the scenes for an exclusive look at what it takes to make operatic magic at the Met. The backstage tour offers a fascinating backstage look at one of the world's premiere performing arts organizations, including visits to the scenic and carpentry shops, rehearsal rooms, dressing rooms, and stage area. *Note: Not all areas may be available on every tour.*

SP17T4 At the Tredwells' Table: A Culinary Tour of the Merchant's House With Professional Chef and Culinary Historian Carl Raymond

CSA Leader: Joseph LaCascia
Location: 29 East 4th Street, Manhattan
Day/Dates: Wednesday, 3/29
Time: 11am to 12:30 pm
Fee: Member \$25, non-member \$30
 Fee does not include lunch
Limited: 20 participants **PTS**

This unparalleled "back-stairs" tour tells the heroic story of the Irish women

who worked in domestic service in 19th century New York, overcoming homesickness, culture shock, and prejudice to cultivate a new home and a new identity on foreign soil – and ultimately altering the face of New York City forever. You'll visit four floors of period rooms, from the ground floor kitchen to the 4th floor servants' quarters, experiencing what daily life was really like for the Tredwells' Irish servants. *Please note: This tour features numerous steep narrow staircases. There are no elevators.*

SP17T5 Jazz Music Series in Harlem (concert & lunch)

CSA Leader: Ana Maldonado
Location: Rendall Memorial Presbyterian Church, 59 W. 137 Street, Manhattan
Day/Dates: Tuesday, 4/4
Time: 12 noon – 4:30 pm
Fee: Member \$45, non-member \$50
 The fee includes lunch
Limited: 20 participants **PTS**

"Welcome to Harlem" sponsors the Harlem Jazz Series. Indulge in an afternoon that will delight your senses in a place where African-American culture and cutting edge talent intertwine to form a rich, thriving music scene. You will enjoy Swingin' Bebop, Blues and Brass. After the event you will have an opportunity to meet the musicians then take pleasure in eating at the Harlem Barbeque, just one block away from the event.

KEY TO SYMBOLS:

- T** TRAVEL INSTRUCTIONS WILL BE MAILED
- P** PARKING/TRANSPORTATION AVAILABLE
- S** THIS EVENT IS SOMEWHAT STRENUOUS

SP16T9 Brooklyn Army Terminal

CSA Leader: Emerson Spry
Location: 140 58th St, Brooklyn, NY
Day/Dates: Wednesday, 4/19
Time: 9:30 am – 12:30 pm
Fee: Member \$35, non-member \$40
 The fee includes lunch
Limited: 25 participants **PTS**

Step inside an engineering marvel that is today a center of innovation and business development in New York City. Built to supply American forces on the Western Front in World War I, this enormous Cass-Gilbert designed complex served as a supply base for the American military until the Vietnam War. Today, this thriving industrial park is home to over 100 companies in a wide array of industries, from precision manufacturers to biotech researchers, online retailers to chocolatiers. We will explore how millions of tons of war supplies and personnel were shipped through this teeming transportation hub, learn the stories of soldiers, longshoremen, and merchant mariners who worked these piers. We will see what makes the Port of New York the envy of the world in the mid-20th century, why it went into decline, and how Brooklyn's working waterfront is being revitalized today. Along the way, we will enjoy sweeping views of the harbor visit the 600,000 square-foot unrestored space of Building A, and stop inside the terminal's Architectural Gem and the breath-taking atrium on Building "B". We will conclude the tour with lunch at Pete's Brooklyn Eats located on the premises.

Please note: as with any of our walking tours there will be extensive walking. You should expect to be walking and or standing for up to and perhaps for more than 2 hours. Remember to wear comfortable shoes.

Continued on page R7



RETIREE EVENTS SPRING 2017 REGISTRATION FORM
Members and Spousal Members

REGISTRATION RULES AND PROCEDURES ON BACK

PLEASE NOTE: You must submit a separate check for each event for which you register.
 Each registrant must complete a separate registration form and submit a separate check for each event.

Name of Member: _____ Check Status: CSA Retiree Spousal member

Address: _____

City: _____ State: _____ Zip: _____

Phone: _____ Cell phone: _____

Email : _____

Emergency Contact: _____ Phone: _____

Educational/ Cultural Event Code	Event Title	Fee
<i>SP17</i>		
<i>SP17</i>		
<i>SP17</i>		
<i>SP17</i>		
<i>SP17</i>		
<i>SP17</i>		
<i>SP17</i>		

If you would like us to confirm registration by email instead of US mail, check the box here and make sure you give us your email address (above).

TOTAL: _____

Make checks payable to: CSA Retiree Chapter
Mail to: CSA Retiree Chapter, Attn: Educational/Cultural Committee,
 40 Rector Street, 12th Floor, New York, NY 10006

ALL CANCELLATIONS MUST BE IN WRITING OR EMAIL TO LUCIE@CSA-NYC.ORG

FOR OFFICE USE ONLY:

SPECIAL PULLOUT SECTION

What You Need To Know To Register (See Guest Registration Form Page R6)

GENERAL PROCEDURES

- Registration opens on Monday, February 6, 2017 (on-line at 11 AM). Only members and spousal members may register at this time. The online system will not allow for guest registration. All registrations will be on a first come first served basis.
- Please note:** Members may register by mail or through the online system. **Guests may register by mail only and will be entered as of February 13, 2017.**
- Guests may register without restrictions:** SP17T11 Jazz at Lincoln Center & Dinner; SP17T13 Tenement Museum & Tasting Dinner; SP17T14 Caramoor Performing Arts Center; SP17T15 Blue Man Group; SP17T19 New York Harbor Evening Cruise.
- All mail-in registrations up to the actual date of registration will be placed in one box. On that day of registration, registration forms will be withdrawn from the box randomly.
- If you are placed on a waitlist, and a cancellation occurs the Retiree Office will contact you and place you on the registered list. No such change in your registration status will be made without contacting you and getting your approval. If you no longer wish to be on the waitlist, contact us at (212) 823-2076 or email lucie@csa-nyc.org.
- Members may register for any or all the program events. **All events are to be placed on one form.** However, it is important that each registrant must complete a separate registration form. If you intend to register by mail, make additional copies of the registration form as needed. Copies of the various registration forms can be found on the CSA website www.csa-nyc.org under the Retiree Chapter heading in the "Upcoming Events" section.
- In all of our events, the fee always includes all taxes and gratuities except otherwise noted.
- In the case of too few registrants for an offering, the CSA Retiree Chapter reserves the right to cancel the program with full refunds. .
- All events are scheduled rain or shine.**

Continued on Page R6



Form For Guests

RETIREE EVENTS SPRING 2017 REGISTRATION FORM

REGISTRATION RULES AND PROCEDURES ON BACK

PLEASE NOTE: You must submit a separate check for each event for which you register.
Each registrant must complete a separate registration form and submit a separate check for each event.

Sponsoring Member: _____

Guest Name: _____

Address: _____

City: _____ State: _____ Zip: _____

Phone: _____ Cell phone: _____

Email : _____

Emergency Contact: _____ Phone: _____

Educational/ Cultural Event Code	Event Title	Fee
SP17		
SP17		
SP17		
SP17		
SP17		
SP17		
SP17		

If you would like us to confirm registration by email instead of US mail, check the box here and make sure you give us your email address (above).

TOTAL: _____

Make checks payable to: CSA Retiree Chapter
Mail to: CSA Retiree Chapter, Attn: Educational/Cultural Committee,
40 Rector Street, 12th Floor, New York, NY 10006

ALL CANCELLATIONS MUST BE IN WRITING OR EMAIL TO LUCIE@CSA-NYC.ORG

FOR OFFICE USE ONLY:

Continued from Page R5

MAIL-IN PROCEDURES

1. Your original registration form will be returned with a notation of either "Registered or "Waiting List". The turn-around time for registration should be no more than two weeks. If you do not receive notification within this time period you should call the Retiree Office at (212) 823-2020 and speak to Lucie, Emerson or Jacki.
2. You **must submit a separate check for each event you wish to attend**. For example, if you wish to register for five events, you must complete one form but submit five separate checks. This will be the same process if you are completing a registration for your spouse or for a guest. **For those on a waitlist, after the event, your check will be VOIDED and returned.**
3. Make checks payable to "CSA Retiree Chapter" and mail to: CSA Retiree Chapter, Attn: Educational/Cultural Committee, 40 Rector St., 12th Floor NY, NY 10006.

ONLINE REGISTRATION

1. Only members and spousal members may register online. The online system is closed to guests.
2. To register online, follow the prompts on the Retiree Chapter section on the CSA website (www.csa-nyc.org). The link will be posted on January 30th and will be "activated" on February 6th at 11 a.m.
3. As you work through the online registration, the system will make note if the registration limit has been reached and mark your form as wait listed.
4. All rules and procedures listed above for general and mail-in registration prevail for online registration.
5. Once you have completed the online process, your credit card will be charged for those events for which you are registered. **The system will not charge your card for events where you are waitlisted.**
6. **When you finish the registering, print your Registration Record. It will be your only copy of your registration.**

CANCELLATION POLICY

1. **For either mail-in or online registrations of all Educational/Cultural events, refunds will be given for program cancellations made up to a month prior to the date of the event. For cancellations less than a month prior to the event, refunds will only be issued if we can fill your slot from the waiting list. There will be no exceptions. All cancellations must be in writing or by email to lucie@csa-nyc.org. Call the Chapter office at (212) 823-2020 if you have questions.**
2. **Refunds will be processed only after the event has been concluded. However, in the case where there is a significantly long waiting list, some refunds may be processed sooner.**
3. In the case of mail-in registrations, checks will be voided and returned to the registrant.
4. In the case of online registrants, refunds will be handled through your credit card.



LUCIE ELIO

■ LEFT: Retirees who visited an historic Hudson Valley estate saw things like this spinning jenny, commonly used in the 17th century. RIGHT, TOP: Emerson Spry meets a friendly donkey at the Inn at Buttermilk Falls, estate of African American opera singer Dorothy Maynort. RIGHT, BOTTOM: A mill at the Gomez Mill House, oldest Jewish house in the USA.

Continued from R4

TRIPS/WALKING TOURS

SP17T10 Tour of St. Bartholomew Church, with Organ Recital

CSA Leader: Ana Maldonado
Location: 25 Park Ave, New York, NY 10022

Day/Dates: Wednesday, 4/26

Time: 10 am – 2 pm

Fee: members \$33, non-members \$38

Limited: 20 participants **PT**

St. Bartholomew's Church, commonly known as St. Bart's, is a historic Episcopal parish founded in January 1835. The Highlights Tour will offer an insight into the splendor of St. Bart's. It's a peek into the history and stunning works of art, architecture, and stories about the church. In addition to the tour, we will enjoy an organ recital. St. Bartholomew's is noted for its pipe organ and is central to the liturgical and concert life of the church. The organ has five keyboards and more than 12,000 pipes and is the largest in New York and one of the ten largest in the world. Its system is so complex that it requires its own staff member.

SP17T11 Celebrating Ella Fitzgerald's Centennial at Jazz at Lincoln Center & Dinner

CSA Leader: Lucie Elio
Location: 10 Columbus Circle, NYC
Day/Date: Friday, 4/28

Time: 5 – 10 pm

Fee: Member \$185, non-member \$190
The fee includes dinner. Tickets are non-refundable.

Limited: 20 participants **PT**

The Retiree Chapter will be participating once again in another musical evening at the Jazz at Lincoln Center – Celebrating Ella, the First Lady of Jazz at the Rose Theater. It is the centennial of Ella Fitzgerald, a vocalist whose legacy and influence define a classic era of jazz singing. Through diverse repertoire arranged by the Jazz at Lincoln Center Orchestra, guest vocalists will demonstrate why the "First Lady of Song" remains a case study in succinct phrasing and uncompromising musicality. Joining the Orchestra for this special occasion are two celebrated veteran vocalists: Kenny Washington and Roberta Gambarini. Before we go to the jazz center, join fellow music lovers for dinner at Bello's Restaurant.

SP17T12 New York Court Tour and Lunch

CSA Leader: Lois Honig
Location: 111 Center Street, Manhattan

Day/Date: Tuesday, 5/9

Time: 11 am to 3 pm

Fee: Member \$45, non-member \$50
The fee includes lunch.

Limited: 15 participants **PTS**

This event includes a tour of the courthouse, and overview of the court system, observe a criminal trial and visit

a Correction Department's holding cell. A viewing of an actual court proceeding will provide us with a better understanding of the court's daily operation. After the tour, we will have lunch.

SP17T13 Tenement Museum & a Tasting Diner

CSA Leader: Michael Ebenstein
Location: 103 Orchard Street, Manhattan

Day/Date: Friday, 5/12

Time: 6 pm to 8 pm

Fee: Member \$45, non-member \$50
The fee includes dinner.

Limited: 45 participants **PTS**

The CSA Retiree Chapter has made special arrangements for a private evening tour of the Tenement Museum. The museum is closed to the general public at this time of the day. We will have an overview tour of the Museum that focuses on the food and people who lived in these tenements. Afterwards, we will meet in their event space for a discussion and tasting dinner of seven to eight different items. Wine, beer and coffee will accompany the tastings. An educator from the Museum will lead us through the various sites and in a discussion of the foods we will be experiencing. *Please note: This tour features numerous steep narrow staircases.*

SP17T14 Caramoor Performing Arts Center

CSA Leader: Lucie Elio
Location: 149 Girdle Ridge Road, Katonah, NY

Day/Date: Wednesday, 5/17

Time: 11 am – 2 pm

Fee: Member \$65, non-member \$70
Tickets are non-refundable.

The fee includes lunch.

Limited: 16 participants **PTS**

Caramoor Center for Music and the Arts is a destination for music, captivating programs, beautiful gardens and grounds, in Katonah, NY. Join us and absorb the richness of a bygone era: hear a concert, and Mediterranean Celebration; tour the Rosen House and enjoy a buffet lunch. When you set foot on the grounds, you will see Mediterranean-style architecture surrounded by 90 acres of cultivated grounds and gardens. Fine and decorative Asian and Renaissance art is what you find when you venture indoors. History, culture and, music all live here. After lunch, feel free to wander through the grounds and gardens of the property. Members are responsible for their own transportation. There is a Metro-North stop nearby.

SP17T15 Blue Man Group Pre Show and Show

CSA Leaders: Roz Persky
Location: 434 Lafayette Street, Manhattan

Day/Date: Saturday, 5/20

Time: 12:30 pm – 3:30 pm

Fee: Members \$94, non-members \$99
Tickets are non-refundable.

Limited: 20 participants **PTS**

We will participate in the pre-show event, "Behind the Blue Soundcheck" which gives us the ultimate sneak peek behind the 'blue curtain.' We hear a brief history of the show and the BMG's philosophies. We will observe the Blue Men out of make-up and costume as they run through various parts of the show both musical and technical. At the

Continued on page R8

KEY TO SYMBOLS:

- T** TRAVEL INSTRUCTIONS WILL BE MAILED
- P** PARKING/TRANSPORTATION AVAILABLE
- S** THIS EVENT IS SOMEWHAT STRENUOUS



LUCIE ELIO

■ ABOVE TOP: Erica Shatz-Spry enjoys tea and scones at the Bartow-Pell Mansion. ABOVE: The Bartow Pell estate sits on on 350 acres of rolling hills in the Bronx, New York.

Continued from Previous Page

2 pm show the world renowned Blue Man Group will combine music, technology and comedy to create a form of entertainment that defies categorization and appeals to people of all ages.

SP17T16 New York Transit Museum & Lunch

CSA Leader: Stanley Wilson
Location: 99 Schermerhorn St, Brooklyn
Day/Date: Thursday, 6/1
Time: 11:30 am – 3 pm
Fee: Member \$65; non-members \$70
 The fee includes lunch.
Limited: 20 participants **PTS**

Relive the experience of traveling through New York City during the early, mid, and late twentieth century!

Explore the hands-on collection of vintage subway and elevated cars and exhibits that share the rich story of public transportation. Discover the history, technology, design, and future of transportation with our expert staff. The Museum is located down two flights of stairs. We will be having lunch before the tour at the Queen Restaurant on Court Street.

SP17T17 Tour of the Old Westbury Gardens

Tour Guide: Kathleen Murphy
Location: 71 Old Westbury Road, Westbury, NY
Day/Date: Monday, 6/5
Time: 11 am to 2 pm
Fee: Member \$15; non-members \$20
Limited: 20 participants **PTS**
 Come and join CSA as we take a

Immigrant History

The Ellis Island Museum

SP17T18 Ellis Island Museum

CSA Leader: Lark Morrison
Location: Ellis Island
Day/Date: Wednesday, 6/14
Time: Ferry 10 am, tour 11 am
Fee: Member \$20, non-member \$25
 Includes ferry ticket
Limited: 20 participants **PTS**

Ellis Island is an island that was the gateway for millions of immigrants to the United States as the

nation's busiest immigrant inspection station from 1892 until 1954. Last semester CSA retirees took the Hard Hat Tour of the Ellis Island Hospital. This semester we will return to Ellis Island and visit the Ellis Island Museum. The tour will be a self-guided audio tour with possibility of a docent if available. The ferryboat ticket will allow you to visit both Ellis Island and Liberty Island.



LUCIE ELIO

■ Retirees listen to a docent, who talked about the Ellis Island hospital, which is behind them.

guided tour of the Westbury House and Gardens. Old Westbury Gardens is the former home of John S. and Margarita Grace Phipps. The magnificent Charles II-style mansion is nestled amid 200 acres of formal gardens, landscaped grounds, woodlands, ponds and lakes. The Westbury House is furnished with fine English antiques and decorative arts from the more than fifty years of the family's residence. For lunch you can eat at the Gardens' Café in the Woods, nestled outside under the shade of the North Allee, offers an exquisite fare of sandwiches, salads and beverages. The café is not open during inclement weather. Parking is available at a fee.

SP17T19 New York Harbor Evening Cruise

CSA Leader: John Oricchio
Location: 1 World's Fair Marina, Pier One. Directions will be sent.
Day/Date: Friday, June 23
Time: 6 – 11 pm
Fee: Member \$90, non-member \$95
 Tickets are non-refundable.
Limited: 10 participants **PTS**

The Association of Assistant Principals (AAP) along with the NYC Elementary Schools Principals Association chartered a harbor cruise ship for the evening. They are offer-

KEY TO SYMBOLS:

- T** TRAVEL INSTRUCTIONS WILL BE MAILED
- P** PARKING/TRANSPORTATION AVAILABLE
- S** THIS EVENT IS SOMEWHAT STRENUOUS

ing the Retiree Chapter's members an opportunity to join their colleagues for the evening at a reduced rate. Because the AAP has sufficient numbers, this will be a private cruise for CSA members/guests only. The ship will cruise the East River to the Statue of Liberty and then return to the Marina. The trip will offer buffet dining, an open bar, a DJ and dancing. The dress code will be casual. Members and non-members will be registered together and information will be mailed in advance.